

HAIR ESSENTIALS

HAIR CUT	PRICE
FRINGE/ BANGS	150
HAIR CUT (UV,STRIGHT,WITH WASH)	600
ADVANCE HAIR CUT (WITH WASH)	800
CHANGE OF STYLING	1000
BABY GIRL(BELOW 6 YEARS) NO WASH	300

All Govt. taxes applicable on all services.

STYLING

HAIR WASH & CONDITIONING (ONLY BLAST DRY)	400
BLOW DRY (MEDIUM/LONG)	600/750+
IRONING (MEDIUM/LONG)	1000/1100+
TONGS (MEDIUM/LONG)	1100/1300+
UPDO(MEDIUM/LONG)	800/900+

NOTE:-PRICE MAY VARY DEPENDING ON THE LENGTH AND DENSITY OF HAIR)

Pay For 4 Get One 1 Free (Member Ship Discount Does'nt Includes)
All Govt. taxes applicable on all services.

HAIR COLORING

AMMONIA (MAX 1.5 INCEN)	1100
AMMONIA FREE REGULAR (MAX 1.5 INCEN)	1200
AMMONIA FREE PREMIUM (MAX 1.5 INCEN)	1600
NOTE:-PRE WASH IS CHARGEABLE FOR ROOT TOUCH UP	200

GLOBAL HAIR COLORING

AMMONIA (S/M/L)	2700/3000/3900+
AMMONIA FREE REGULAR(S/M/L)	3000/3500/4000+
AMMONIA FREE PREMIUM (INOA)	3500/4000/5000+
(NOTE:-PRICE MAY VARY DEPENDING ON THE LENGTH AND DENSITY OF HAIR)	

HIGHLIGHTS

PER STREAK	375
PER STREAK(WITH PRE LIGHTENING)	550
PARTIL HIGHLIGHTS (UP TO 12 STREAKS)	3700
PARTIL HIGHLIGHTS (UP TO 12 STREAKS WITH PRE-LIGHTENING)	5700

GLOBAL WITH HIGHLIGHTS

DUAL COLOURING (OMBRE/SOMBRE/BALAYAGE TECHNIQUE)	6000+
--	-------

No Warranty & Guarantee on colour and chemical treatments.
All Govt. taxes applicable on all services.

TEXTURE

STRAIGHTENING(Short/Medium/Long)	5000/6500/8500+
KERATIN TREATMENT(Short/Medium/Long)	6000/7500/9000+
BOTOX TREATMENT(Short/Medium/Long)	7000/8000/10000+
NANO PLASTIA	8000/10000/12000+

NOTE:- NO MEMBERSHIP DISCOUNT ALLOWED ON ABOVE SERVICES
No Warranty & Guarantee on colour and chemical treatments.
All Govt. taxes applicable on all services.



HAIR TREATMENTS

HEAD MASSAGE	PRICE
OIL MASSAGE(coconut oil/almond oil)	600/700+

REGULAR HAIR SPA

REGULAR HAIR SPA (Medium/Long)	900/1000+
REGULAR HAIR SPA (Medium/Long)	900/1000+
DEEP CONDITIONING (ONLY BLAST DRY INCLUDES WITH HAIR SPA SERVICES)	1200+ 1000+

SCALP TREATMENT

DANDRUFF CONTROL MEDIUM/LONG (for best results treatment to be taken multiple sitting)	1500/1800+
--	------------

ANTI HAIR FALL

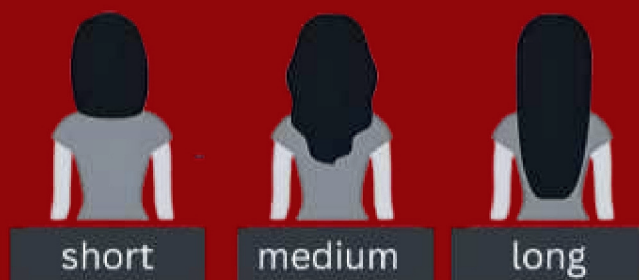
REGULAR (Medium/Long)	1200/1500+
Aminexil treatment (Medium/Long) (for best results treatment to be taken multiple sitting)	1600/1800+
Pay For 5 Get One 1 Free (Member Ship Discount Does'nt Includes)	
All Govt. taxes applicable on all services.	

PROTEIN TREATMENT(WELLA SYSTEM PROFESSIONAL)

REPAIR RESTORE (Medium/Long)	2500/2900+
KERATIAN RESTORE (Medium/Long)	3000/3900+

PREMIUM (FIBER CLINIX)

FORTIFY BOOSTER(DEMAGED HAIR) (Medium/Long)	3500/4300+
VIBRANCY BOOSTER(COLOR HAIR) (Medium/Long)	3500/4300+
HYDERATE BOOSTER(DRY HAIR) (Medium/Long)	3500/4300+
TAME BOOSTER(FRIZZY HAIR) (Medium/Long)	3500/4300+
VOLUMIZE BOOSTER(THIN HAIR) (Medium/Long)	3500/4300+



MOROCCAN OIL

NTENSE REPAIR TREATMENT (Medium/Long)	3600/4500+
NTENSE SMOOTHING TREATMENT (Medium/Long)	3600/4500+

Pay For 5 Get One 1 Free (Member Ship Discount Does'nt Includes)
Pay ₹500 And Get Add On Services Of Hair Fall Or Dandruff Treatment
All Govt. taxes applicable on all services.

BODY ESSENTIALS

THREADING

EYEBROWS	50
UPEERLIP/LOWER LIPCHARCOAL	50
CHIN/FOREHEAD	50
FACE SIDES	60
FULL FACE	120

NOTE:- NO MEMBERSHIP DISCOUNT ALLOWED ON ABOVE SERVICES

WAXING

	FLAVOUR	ROLL ON
HALF ARMS/HALF LEGS	310/450	387/562
FULL ARMS/FULL LEGS	410/650	510/710
FULL WAXING (FA/FL/UA) (no member ship discount)	1100	1375
FULL BACK/MIDRIFF	500	625
FULL BODY (doesn't includes bikini line) no member ship discount	2100	2600
All Govt. taxes applicable on all services.		

PEEL OFF WAX

UPPER LIP	100
CHIN	100
FACE	330
UNDER ARMS	200
BIKINI LINE	1000
FULL BIKINI (NO MEMBERSHIP DISCOUNT)	2500

BLEACH/DETAN PACK

UPPER LIP	60
UNDER ARMS	130
FEET	150
FACE AND NECK - REGULAR	500
FACE AND NECK - PREMIUM	1000
FACE, NECK & BLOUSELINE	600
HALF ARMS/LEGS	420/650
FULL ARMS/FULL LEGS	600/750
MIDREIFF/BACK	450/650
FULL BODY REGULAR (NO MEMBERSHIP DISCOUNT)	2400

FACIALS

CLEAN UP(30 MIN)

Regular clean up(30 min)	650
--------------------------	-----

CLASSIC FACIALS(45 MIN)

FRUIT FACIAL	1000
CHARCOAL	1400
RED WINE FACIAL	1500
GOLD FACIAL	1600
TAN CLEAR	1700

PERMIUM FACIALS (60 MIN)

PLATINUM FACIALS	2000
SENSI GLOW	2500
SKIN WHITENING FACIAL	2700
FRUITY MARMALADE (KIWI, PAPAYA, PINEAPPLE)	3000

SIGNATURE FACIALS (60 MIN)

SHINE & GLOW FACIAL	3600
SKIN BRIGHTENING FACIAL	4000
24 CARAT GOLD FACIAL	4400

BODY CARE

BACK FACIAL	1600
BODY POLISHING FULL ARM	1200
BODY POLISHING FULL LEGS	1500
FULL BODY	5000

LUXURY FACIALS

HYDRA jewel FACIAL	5000
HYDRA WHITENING FACIAL	6000

BRIDAL SPECIAL FACIAL (75 min)

OXYGENNATING GLOW	5500
RADIANT & GLOW	6500

NOTE : Just pay- ₹999 and get Hydera machine services with your favourite facial

ADD ON MASK

VITAMIN C MASK	600
RIGHTENING	1200
GOLD PEEL OF MASK	1600

(no member ship discount)

MANICURE/PEDICURE

COCOA BUTTER MANI/PEDI	450/600
WINE MANI/PEDI (45 MIN)	550/700
SPA MANI/PEDI(45 MIN)	650/800
CRYSTAL SPA MANI/PEDI(45 MIN)	900/1000
ICE CREAM PEDI (60 MIN)	1600
DETAN PEDICURE+MANICURE	1700
BUBBLE GUM MANI/PED	2000

NAIL POLISH

CHANGE OF NAIL COLOUR	120
CUT, FILE&POLISH	200
FRENCHPOLISH(FINGERS/TOES)	300

REFLEXOLOGY (30 MIN)

NECK & SHOULDER	500
HAND	300
FEET	600

All Govt. taxes applicable on all services.