

## HAIR ESSENTIALS

HAIR CUT	PRICE	MEM
FRINGE/ BANGS	150	NA
HAIR CUT (UV,STRIGHT,WITH WASH)	600	550
ADVANCE HAIR CUT (WITH WASH)	800	700
CHANGE OF STYLING	1000	900
BABY GIRL( BELOW 6 YEARS) NO WASH	300	NA

All Govt. taxes applicable on all services.

### STYLING

HAIR WASH & CONDITIONING (ONLY BLAST DRY)	400	NA
BLOW DRY (MEDIUM/LONG)	600/750+	550/700+
IRONING (MEDIUM/LONG)	1000/1100+	900/1000+
TONGS (MEDIUM/LONG)	1100/1300+	1000/1100+
UPDO(MEDIUM/LONG)	800/900+	700/800+

NOTE:-PRICE MAY VARY DEPENDING ON THE LENGTH AND DENSITY OF HAIR )

Pay For 4 Get One 1 Free (Member Ship Discount Does'nt Includes)  
All Govt. taxes applicable on all services.

## HAIR COLORING

AMMONIA (MAX 1.5 INCEN )	1100	1000
AMMONIA FREE REGULAR (MAX 1.5 INCEN)	1200	1100
AMMONIA FREE PREMIUM (MAX 1.5 INCEN )	1600	1400
NOTE:-PRE WASH IS CHARGEABLE FOR ROOT TOUCH UP	200	NA

## GLOBAL HAIR COLORING

AMMONIA ( S/M/L)	2700/3000/3900+	2500/2700/34000+
AMMONIA FREE REGULAR( S/M/L)	3000/3500/4000+	2700/3100/3600+
AMMONIA FREE PREMIUM (INOA)	3500/4000/5000+	3200/3600/4500+
(NOTE:-PRICE MAY VARY DEPENDING ON THE LENGTH AND DENSITY OF HAIR )		

## HIGHLIGHTS

PER STREAK	375	350
PER STREAK(WITH PRE LIGHTENING)	550	500
PARTIL HIGHLIGHTS (UP TO 12 STREAKS)	3700	3200
PARTIL HIGHLIGHTS (UP TO 12 STREAKS WITH PRE-LIGHTENING)	5700	5000
DUAL COLOURING	6000+	5500+
GLOBAL WITH HIGHLIGHTS (OMBRE/SOMBRE/BALAYAGE TECHNIQUE)	5000+	NA

No Warranty & Guarantee on colour and chemical treatments.  
All Govt. taxes applicable on all services.

## TEXTURE

STRAIGHTENING (Short/Medium/Long)	5000/6500/8500+	NA
KERATIN TREATMENT (Short/Medium/Long)	6000/7500/9000+	NA
BOTOX TREATMENT (Short/Medium/Long)	7000/8000/10000+	NA
NANO PLASTIA	8000/10000/12000+	NA

NOTE:- NO MEMBERSHIP DISCOUNT ALLOWED ON ABOVE SERVICES  
No Warranty & Guarantee on colour and chemical treatments.  
All Govt. taxes applicable on all services.



## HAIR TREATMENTS

HEAD MASSAGE	PRICE	MEM
OIL MASSAGE(coconut oil/almond oil)	600/700+	550/650+

### REGULAR HAIR SPA

REGULAR HAIR SPA (Medium/Long)	900/1000+	800/900+
REGULAR HAIR SPA (Medium/Long)	1300/1500+	1000/1300+
DEEP CONDITIONING	1200+	1000+

(ONLY BLAST DRY INCLUDES WITH HAIR SPA SERVICES)

### SCALP TREATMENT

DANDRUFF CONTROL MEDIUM/LONG	1500/1800+	1400/1600+
------------------------------	------------	------------

(for best results treatment to be taken multiple sitting)

### ANTI HAIR FALL

REGULAR (Medium/Long)	1200/1500+	1100/1400+
<b>Aminexil</b> treatment (Medium/Long)	1600/1800+	1500/1700+

(for best results treatment to be taken multiple sitting)

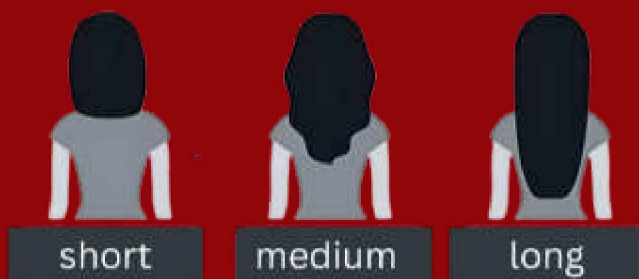
Pay For 5 Get One 1 Free (Member Ship Discount Does'nt Includes)  
All Govt. taxes applicable on all services.

## PROTEIN TREATMENT(WELLA SYSTEM PROFESSIONAL)

REPAIR RESTORE (Medium/Long)	2500/2900+	2200/2500+
KERATIAN RESTORE (Medium/Long)	3000/3900+	2600/3300+

### PREMIUM (FIBER CLINIX)

FORTIFY BOOSTER(DEMAGED HAIR) (Medium/Long)	3500/4300+	3100/3800+
VIBRANCY BOOSTER(COLOR HAIR) (Medium/Long)	3500/4300+	3100/3800+
HYDERATE BOOSTER(DRY HAIR) (Medium/Long)	3500/4300+	3100/3800+
TAME BOOSTER( FRIZZY HAIR) (Medium/Long)	3500/4300+	3100/3800+
VOLUMIZE BOOSTER(THIN HAIR) (Medium/Long)	3500/4300+	3100/3800+



## MOROCCAN OIL

NTENSE REPAIR TREATMENT (Medium/Long)	3600/4500+	3200/4000+
NTENSE SMOOTHING TREATMENT (Medium/Long)	3600/4500+	3200/4000+

Pay For 5 Get One 1 Free (Member Ship Discount Does'nt Includes)  
Pay ₹500 And Get Add On Services Of Hair Fall Or Dandruff Treatment  
All Govt. taxes applicable on all services.

## BODY ESSENTIALS THREADING

EYEBROWS	50	NA
UPEERLIP/LOWER LIPCHARCOAL	50	NA
CHIN/FOREHEAD	50	NA
FACE SIDES	60	NA
FULL FACE	120	NA

NOTE:- NO MEMBERSHIP DISCOUNT ALLOWED ON ABOVE SERVICES

### WAXING

	FLAVOUR	ROLL ON
HALF ARMS	310/450 // 270/370	387/560 // 347/520
HALF LEGS		
FULL ARMS	410/650 // 370/550	510/710 // 470/710
FULL LEGS		
FULL WAXING (FA/FL/UA)	1100 NA	1375 NA
(no member ship discount)		
FULL BACK/MIDRIFF	500	450
FULL BODY	2100	NA
		625 575
		2600 NA

(doesn't includes bikkini line) no member ship discount

All Govt. taxes applicable on all services.

### PEEL OFF WAX

UPPER LIP	100	80
CHIN	100	80
FACE	330	330
UNDER ARMS	200	175
BIKINI LINE	1000	800
FULL BIKINI	2500	NA

(NO MEMBERSHIP DISCOUNT )

### BLEACH/DETAN PACK

UPPER LIP	60	50
UNDER ARMS	130	110
FEET	150	120
FACE AND NECK - REGULAR	500	450
FACE AND NECK - PREMIUM	1000	850
FACE, NECK & BLOUSELINE	600	NA
HALF ARMS/LEGS	420/650	400/600
FULL ARMS/FULL LEGS	600/750	500/650
MIDREIFF/BACK	450/650	400/550
FULL BODY REGULAR	2400	NA

(NO MEMBERSHIP DISCOUNT )

## FACIALS

### CLEAN UP( 30 MIN)

Regular clean up(30 min)	650	600
--------------------------	-----	-----

## CLASSIC FACIALS(45 MIN)

FRUIT FACIAL	1000	800
CHARCOAL	1400	1200
RED WINE FACIAL	1500	1300
GOLD FACIAL	1600	1400
TAN CLEAR	1700	1500

### PERMIUM FACIALS (60 MIN)

PLATINUM FACIALS	2000	1800
SENSI GLOW	2500	2200
SKIN WHITENING FACIAL	2700	2500
FRUITY MARMALADE (KIWI, PAPAYA, PINEAPPLE)	3000	2800

### SIGNATURE FACIALS (60 MIN)

SHINE & GLOW FACIAL	3600	3200
SKIN BRIGHTENING FACIAL	4000	3600
24 CARAT GOLD FACIAL	4400	3900

## BODY CARE

BACK FACIAL	1600	NA
BODY POLISHING FULL ARM	1200	NA
BODY POLISHING FULL LEGS	1500	NA
FULL BODY	5000	NA

## LUXURY FACIALS

HYDRA jewel FACIAL	5000	4500
HYDRA WHITENING FACIAL	6000	5300

### BRIDAL SPECIAL FACIAL (75 min)

OXYGENNATING GLOW	5500	5200
RADIANT & GLOW	6500	5300

NOTE : Just pay- ₹999 and get Hydera machine services with your favourite facial

### ADD ON MASK

VITAMIN C MASK	600	550
RIGHTENING	1200	1100
GOLD PEEL OF MASK	1600	1300

(no member ship discount)

### MANICURE/PEDICURE

COCOA BUTTER MANI/PEDI	450/600	420/550
WINE MANI/PEDI (45 MIN)	550/700	500/650
SPA MANI/PEDI(45 MIN)	650/800	600/700
CRYSTAL SPA MANI/PEDI(45 MIN)	900/1000	800/900
ICE CREAM PEDI (60 MIN)	1600	1500
DETAN PEDICURE+MANICURE	1700	NA
BUBBLE GUM MANI/PED	2000	NA

### NAIL POLISH

CHANGE OF NAIL COLOUR	120	NA
CUT, FILE&POLISH	200	NA
FRENCHPOLISH(FINGERS/TOES)	300	NA

### REFLEXOLOGY (30 MIN)

NECK & SHOULDER	500	450
HAND	300	250
FEET	600	550

All Govt. taxes applicable on all services.